

DOBLE ELE INTERNATIONAL WEEK: Dive into Sevillian culture and improve your Spanish level.

Hello everyone,

Our Spanish School in Seville, Doble ELE, is reaching you to invite you to our INTERNATIONAL WEEK.

For Beginners A0-A2:

16-20 June

For Intermediate B1-B2:

13 -17 May

Take advantage of **Erasmus + financial support** (ask your International Office for further information. Our 20 lessons course meets the Erasmus + requirements) to join us and have a great learning and cultural experience in Seville. We have come up with a Spanish Course specially designed for those working at university level (teaching or staff) and a cultural offer to get to know our city not only as a tourist but also as a we local do. It is a promise!

If you want to take part, we would need you to follow these steps:

First step is to complete our level test but if you have never studied Spanish before, this does not apply for you:

<https://forms.gle/9wTtNCqQnL48MhjGA>

Please, let us know if you need to complete the test or not.

You should also complete our registration form in order to book your place. Remember our groups have limited places so once we have 15 students, we do not accept more participants during that week.

<https://forms.gle/t3bHJj6uDGHEMizH6>

Please, do not hesitate in contacting us for further information or any doubt you may have.

Regards,

contacto@dobleelesevilla.com

www.dobleelesevilla.com



SPANISH COURSE IN SEVILLE



WHEN? Every month except January and February

WHERE?

Seville: the city that best suits your needs



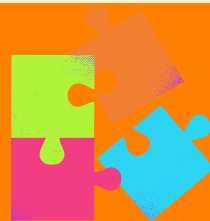
WHY?

Thanks to our long professional track record in the field of teaching Spanish as foreign language and to our extensive experience in international students and staff mobility, we have created our program WEEK UP Sevilla! Which will let you maximize your learning and get to know our culture as a local.

WHAT DOES IT CONSIST ON?

This is an intensive course with 20 lessons designed to push forward your Spanish level, both intermediate or beginner. This program offers courses from A0-A2 or B1-B2 (depending on the chosen dates). Furthermore, extra cultural activities are included every day (flamenco show, visit to some of the main touristic attractions, museums, etc).

- Level test.
- Welcome kit and learning materials.
- Course completion certificate.
- Accommodation advising.



WHAT IS IT INCLUDED?

20 Hours/week: 410€

Doble ELE Sevilla

contacto@dobleelesevilla.com